

General Questions: How to Install the Nimbie Drivers Manually in Windows 8

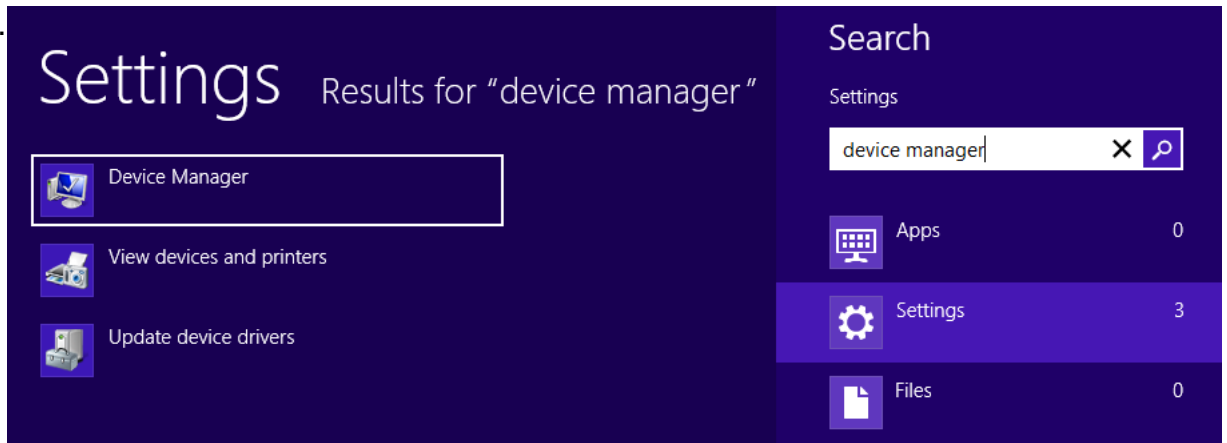
Follow steps below to install drivers for Nimbie under Device Manager in Windows 8.

The user must be signed in as an **administrator** to install drivers.

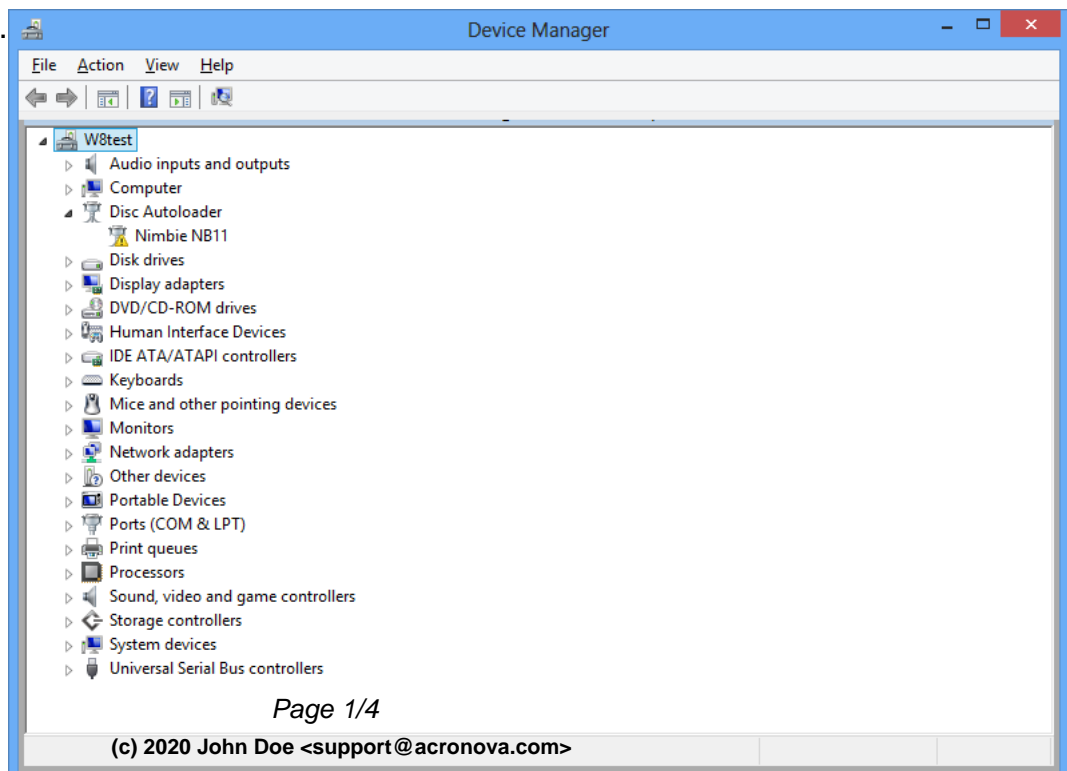
Â

Steps:

- Launch **Search**, select **Settings**.
- Type and search for "**device manager**".

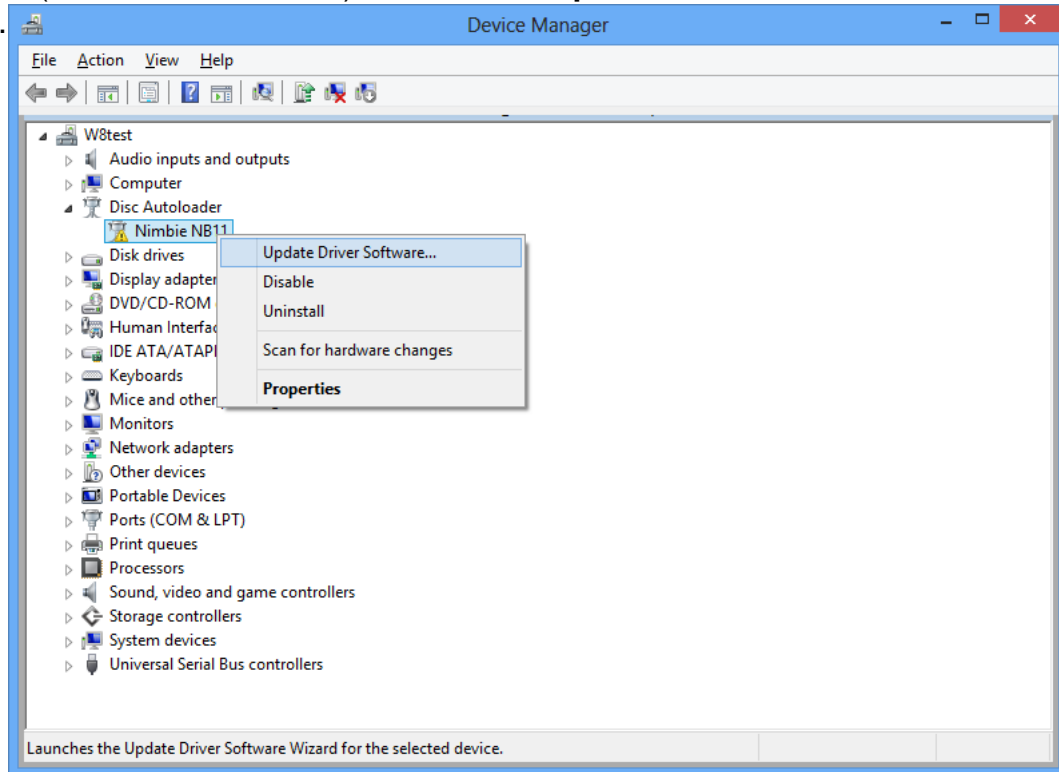


- Select Device Manager.

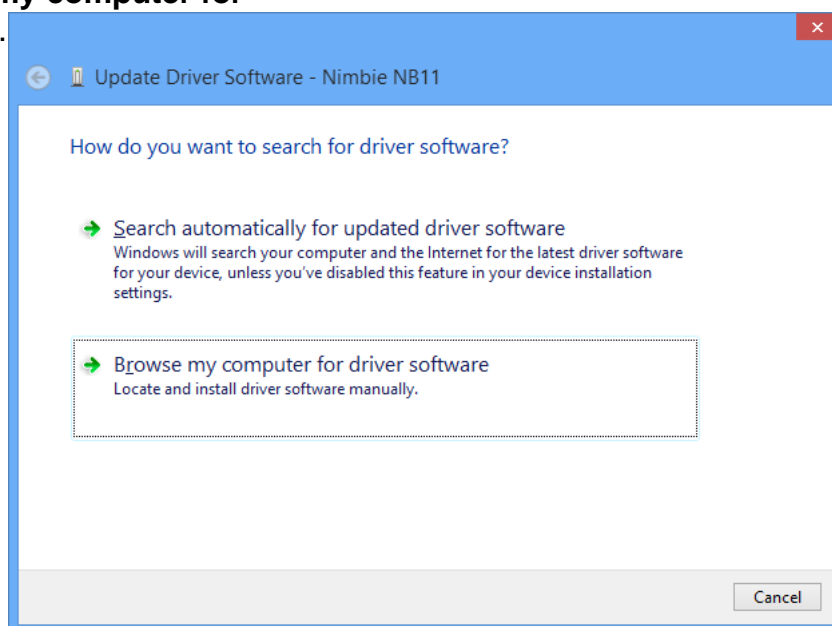


General Questions: How to Install the Nimbie Drivers Manually in Windows 8

- Right click on the "Disc Autoloader" (or "Unknown device"), and click on **Update Driver Software**.

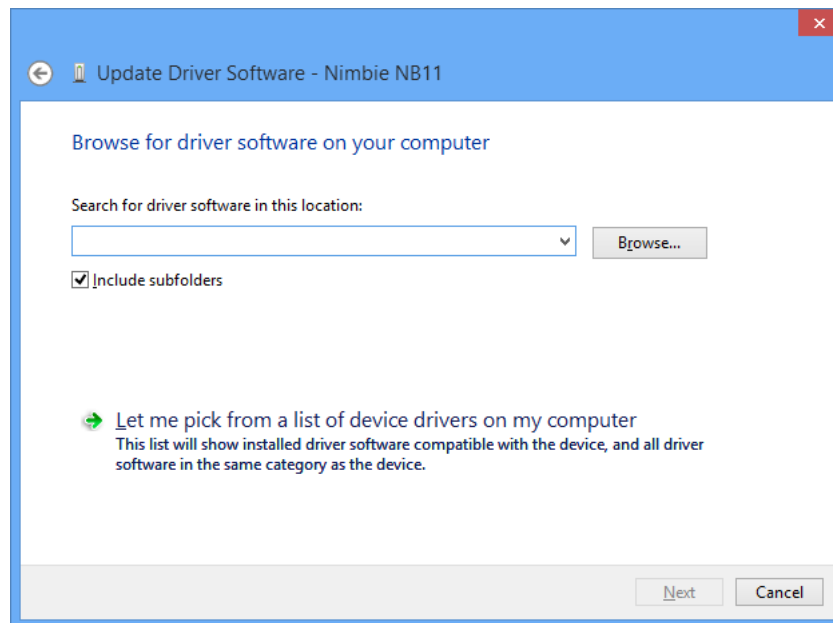


- Select **Browse my computer for driver software**.

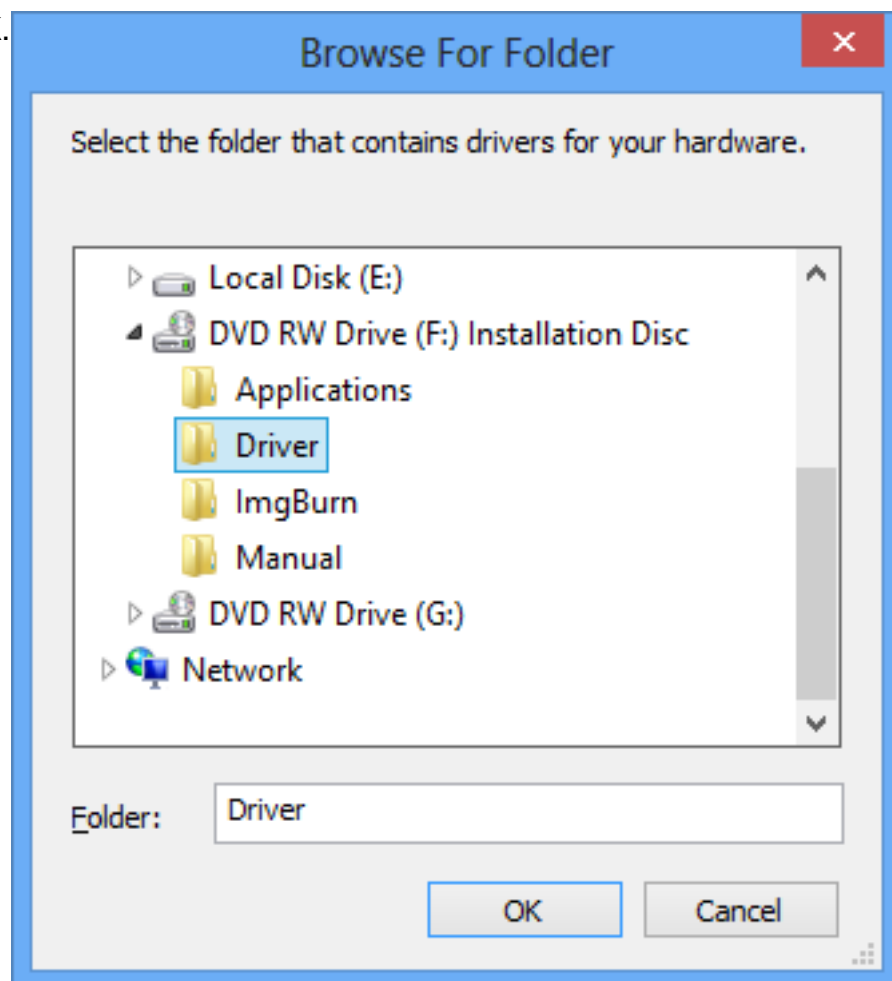


- Click on **Browse**.

General Questions: How to Install the Nimbie Drivers Manually in Windows 8

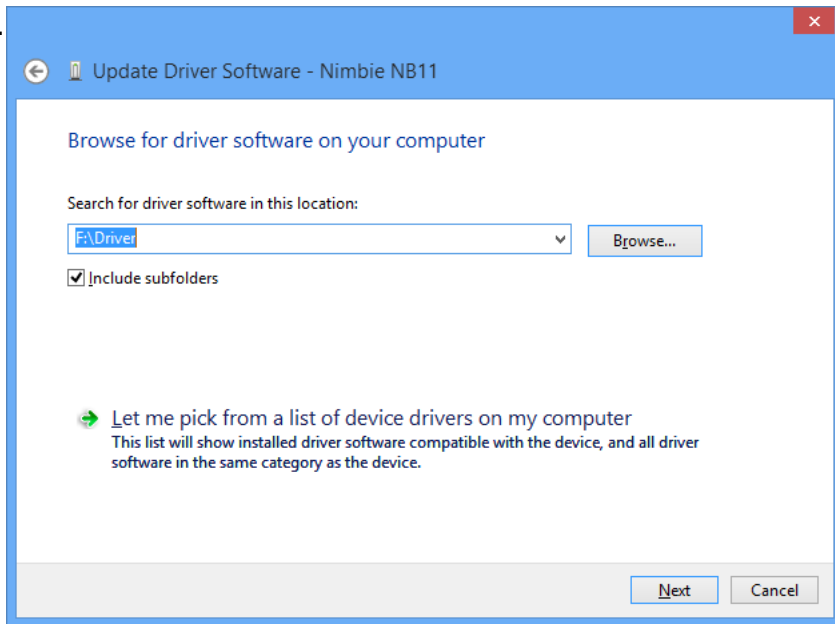


- Insert the Installation Disc, select **Driver** folder and click on **OK**.

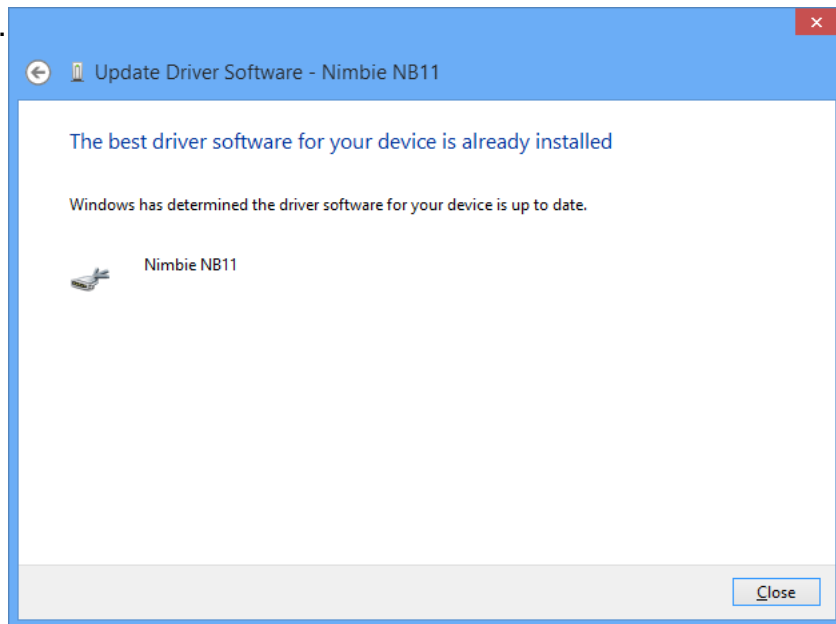


General Questions: How to Install the Nimbie Drivers Manually in Windows 8

- Click on **Next**.



- Click on **Close** to finish.



Unique solution ID: #1129
Author: Acronova Tech Support
Last update: 2012-11-09 08:23