

Operation Manual



Model #:

Apus EZ PLUS 5910D Automatic DVD Duplicator

Serial Number: _____

(Serial number is labeled on the rear panel of your device.)

Congratulations! You have just purchased the one of our most innovative Apus series auto-duplicator. The Apus EP-5910 is a state of the art automate duplication device that is equipped with an embedded intelligent microprocessor that requires no host or personal computer connection. With its advance module controller, the Apus EP-5910 is capable of on-the-fly data burning from the master disc to target blank disc. Its 100 discs storage capacity input hopper allows uninterrupted disc refill while duplication is in progress. The blank disc is automatically dropped from the loader onto the recorder one at a time. Its automatic reject mechanism will dispense all failed copies into a reject bin, hence only the good copies make it to the spindle.

The Apus EP-5910 is simple to operate. Just plug in the power cord, turn on the power, load the disc, and you are ready to go!! With the user-friendly LED controller it takes only minutes to learn. There are no complicate manuals to read. Simply press and go! It's that easy!

This manual provides all the necessary information on operating and maintaining the unit. Please read the manual thoroughly before getting on the road.

For more information regarding duplication, printing, and the management of optical discs, please log on to our website www.acronova.com, and feel free to contact us whenever you have any questions or feedbacks.

Warning...

It is illegal to duplicate copyright materials, including computer software, games, audio CD, VCD, DVD, and others. Violators may subject to fine or prosecuted under the federal laws. Some vendors may allow you to make reasonable back-up copy of the disc, but not all of them do. If you are not sure about the copyright policy of any optical disc, please contact the original publisher.

Things You Need For Duplication

Since Apus EZ PLUS 5910D is a true standalone duplicator, no computer connection is required. You shall only need:

- 1) The master disc:
The original disc that provides the source of data in a duplication job.
- 2) The blank disc:
The target disc; the recordable CD which data from the master CD will be duplicated to.

Important Safety Instructions

For your safety, basic precautions should always be followed to reduce the risk of damage, electric shock, fire, and personal injury. This includes the followings:

- Read this manual carefully and follow all warnings and instructions.
- Always unplug the power cord before trouble-shooting and maintenance.
- Use only 3-wire extension cords that have 3-prong grounding plugs and 3-pole grounding receptacles that accept your device's plug. Make sure the device is connected to a known ground.
- Do not place in direct of sunlight. Make sure the environment is free from any abrupt or humidity changes.
- Keep away water, flammable material, gas, dust, dirt, smoke, and pollution.
- Place this device on a steady level surface.
- Do not move this device when the power is on. Handle it with care, especially the fragile parts.
- Place this device in an air-conditioned environment. Allow space for ventilation of clean, cool air. This device generates heat during burning process. Overheat may lower output quality, increase failure rate, and cause damage to the device.
- Use a reliable power source with a correct voltage and ample current supply. Out-of-specification or unstable power may lower its productivity, increases failure rate, and might also damage the device.
- Give this device a dedicated power outlet. Do not share outlet with other devices.
- Make sure the power cord is secured. Always turn off the power when connecting to the power cord or cable.
- Do not attempt try to disassemble this device. Take it to a qualified service technician when repair work is required. Un-authorized disassemble or repair will definitely void all warranty.
- Do not touch any moving parts to avoid injury or damage.

Copyright Information

c Acronova Technology Inc. 2002-2003.

Version: V3.0R1

All rights reserved. Reproduction, adaptation, or translation without prior written

permission is prohibited, except allowed under the copyright laws.

Trademark Credits

Acronova, Apus, Apus-EZ, Apus-EZplus, Aquila, and Pavo are the trademarks of Acronova Technology Inc. All other products, brands, and trademarks are property of their respective owners.

FCC Regulations

This equipment has been tested and founded to comply with the limits for a Class B digital device, pursuant to Part 15 of the FCC rules. These limits are designed to provide reasonable protection against harmful interference in a residential installation. This equipment generates, uses, and can radiate radio frequency energy. If this equipment is not installed and used according to the instructions, it may cause damaging to the radio communications. However, there is no guarantee that interference will not occur in a particular installation. If this equipment does cause harmful interference to radio or television reception, which can be determined by turning the equipment off and on, the user is encouraged to correct the interference by one or more of the following measures:

- Reorient or relocate the receiving antenna.
- Increase separation between equipment and receiver.
- Connect equipment to an outlet on a circuit different from that to which the receiver is located.
- Consult your dealer or an experienced radio/TV technician.

Any changes or modifications to this device that are not expressly approved by Acronova Technology could void the user's authority to operate this equipment.

Use of a shielded interface cable is required to comply with the Class B limits of Part 15 of FCC rules.

Limited Warranty (North America only)

The information contained in this document is subject to change without notice. Acronova Technology Inc. makes no warranty of any kind with respect to this information.

Acronova Technology Inc. warrants this device for a period of one year from the date of delivery free from defects in material and workmanship. In case of mal-function or fault, Acronova Technology Inc. will, at its option, repair or replace the product. You must return the defective product, repacked and protected in the original package, with a valid RMA number, to an authorized dealer or reseller within the warranty period accompanied by a proof of purchase.

This warranty only covers parts made by Acronova Technology Inc. For certain parts made by other manufacturers, such as hard drives, disc readers and writers, the original manufacturer's warranty applies.

This warranty is not covered when product has been abuse, misuse, alteration, modification, tampering, negligence, faulty installation, accident, lack of reasonable care, un-authorized repairing or service, or if affixed to any attachment not provided with the product, or if the serial number label comes with this product is broken or remove.

This warranty does not cover damages that occur in shipment, due to act of God.

All repair and replacement services shall only be handled by Acronova Technology Inc, and by the authorized service centers. Parts used for replacement are warranted only for the remainder of the warranty period.

ACRONOVA TECHNOLOGY INC. DISCLAIMS ALL IMPLIED WARRANTIES ON THIS PRODUCT, INCLUDING WITHOUT LIMITATION WARRANTIES OF MERCHANTABILITY, PERFORMANCE AND FITNESS FOR A PARTICULAR PURPOSE.

IN NO EVENT ACRONOVA TECHNOLOGY INC. BE LIABLE FOR DIRECT, INDIRECT, SPECIAL, INCIDENTAL, TORT, ECONOMIC, CONTINGENT OR CONSEQUENTIAL DAMAGES RESULTING FROM ANY DEFECT IN THIS PRODUCT OR ITS DOCUMENTATION, INCLUDING, WITHOUT LIMITATION, DAMAGES OR COSTS RELATING TO THE LOSS OF DATA, PROFITS, BUSINESS OR GOODWILL, EVEN IF ACRONOVA TECHNOLOGY INC., ITS AUTHORIZED DEALER OR RESELLER HAS BEEN ADVISED OF THE POSSIBILITIES OF SUCH DAMAGES. IN NO CASE SHALL ACRONOVA TECHNOLOGY INC.'S LIABILITY EXCEED THE AMOUNT PAID BY THE USER OF THIS PRODUCT OUT OF WHICH SUCH CLAIM AROSE.

Any written or oral information or advice given by the dealer, reseller, agents, sales reps, or employee of Acronova Technology Inc. will in no way increase the scope of this warranty nor may you rely on such oral or written communication.

Table of Contents

Preface

| | |
|---------------------------------------|---|
| Things you need for duplication | 2 |
| Important Safety Instructions | 3 |
| FCC Regulations | 4 |
| Limited Warranty | 4 |

Installation

| | |
|---|---|
| Unpacking the Package | 7 |
| Checking the Contents | 7 |
| Getting Familiar with Your Duplicator | 8 |
| Assembling Your Duplicator | 8 |
| Disassembling Input Hopper Leaves | 9 |

Operation

| | |
|--|----|
| Loading Discs | 10 |
| Getting Ready | 10 |
| To Stop a Running Job | 10 |
| To Select a Writing Speed | 10 |
| To Make Duplication | 11 |
| To Execute a Test-Burning (Simulation) | 11 |
| To Execute a System Check (Initialization) | 12 |
| To Park the Arm (for transportation) | 12 |
| Maintenance | 12 |

Reference

| | |
|----------------------------------|----|
| Frequently Asked Questions | 13 |
| Choosing Blank Disc | 14 |
| Production vs. Throughput | 14 |
| LED Message Definitions | 15 |

Unpacking the Package

Follow the instructions outside the package to unpack the device.

Before opening the package, carefully inspect the carton for damage. If any sign shows damage, contact the shipping company and your dealer immediately.

Separate all parts from packing materials. If any parts are missing or damaged, please contact your dealer immediately.

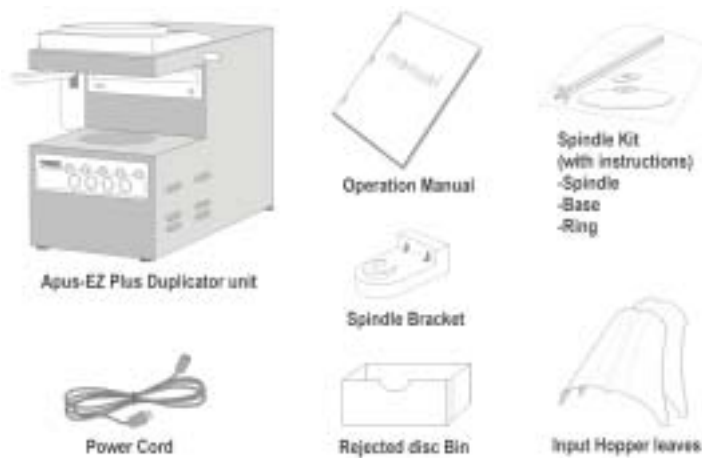
Save the packing materials for future shipment use. Returning goods without original package may not be well protected during transportation, and will void your warranty.

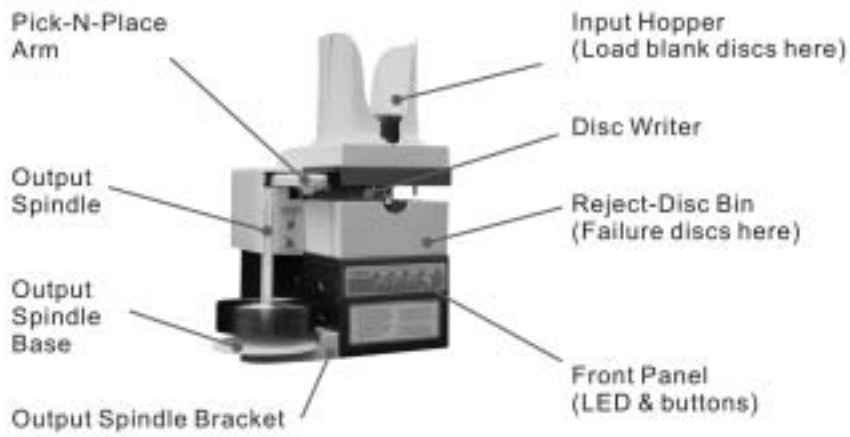
Checking the Contents

Below items are included in the package:

- One Apus EZ PLUS 5910 auto-duplicator unit
- One spindle kit (including one spindle, one spindle base, and one ring)
- One spindle bracket
- Two input hopper leaves
- One reject-disc bin
- One power cord
- This operation manual

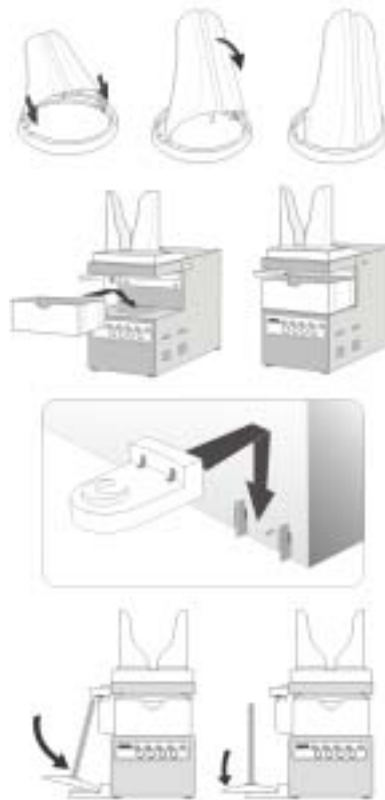
Getting Familiar with Your Duplicator





Assembling Your Duplicator

1. Assemble the input hopper leaves:
Carefully attach the two leaves, one at a time, on the input hopper.
2. Assemble the spindle set:
Follow the instruction that comes with the spindle kit to assemble the spindle. The spindle is where the successful disc will be stacked.
3. Attach the reject bin:
Slip the reject bin to the device beneath the input hopper. The reject bin is where the successful disc will be stacked.
4. Attach the bracket:
Attach the bracket on the side of the device. This bracket provides a position where the spindle assembly shall be sit.
5. Attach the spindle set:
Attach the spindle set on the bracket.
6. Connect the power cord:
Plug in the power cord to the rear



panel of the device, and connect the cord to a wall outlet.

⚠ **Warning...**

Use a reliable power source of a correct voltage with ample current supply. Out-of-specification or unstable power supply may lower its productivity, increase failure rate, and damage the device.

Disassembling Input Hopper Leaves

In gentle horizontally push the leaf to tilt. Then, carefully lift the leaf up and remove it. Repeat the same procedure to disassemble both leaves.



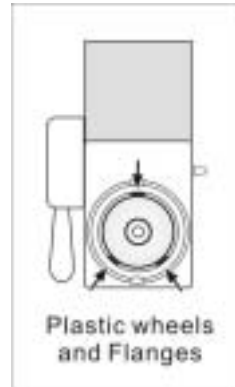
Loading Discs

Some blank discs are sticky and hard to be separated from each other. With the innovative patent-pending mechanism, the Apus EZ PLUS 5910D has the ability to separate sticky discs better than many other automated duplicators. However, we strongly suggest users shuffle blank discs loose before loading them into the input hopper.

Inside the input hopper, there are three plastic wheels with flanges. Make sure the first disc rest evenly on all the flanges when loading it into the input hopper. Afterwards, carefully stack two or three discs on to the first disc. Then, load more discs on top of them.

The capacity of the input hopper is 100 discs. You do not have to fully load it to the maximum capacity every time. Just load the quantity you need. The device is designed to work continuously until the input hopper is empty.

While duplication is in progress, you may refill the hopper with more discs but only up to the maximum 100 discs storage capacity.



Getting Ready

1. Make sure the device is securely plugged to a wall outlet that can provide a stable power source of the correct voltage.
2. Turn on the power switch at the rear panel of Apus EZ PLUS 5910D. The Apus EZ PLUS 5910D will enter initialization process, and the LED indicators will begin flashing for a while.
3. When the initialization process is done, the ready indicator will be lit while others are off. The device is ready to be operated now.

To Stop a Running Job

During any burning or simulation process, you may press the test/cancel button to stop the process. If the unit is in the middle of a process cycle, it will stop after the current cycle is done and return to ready mode.

To Select a Writing Speed

Theoretically, the unit automatically adjusts the burning speed according to the quality of the disc. It starts burning at a lower speed then gradually increases to a higher speed **until the maximum allowable speed is achieved. Depending on**

格式化

the quality of disc, the system maximum speed may never be reached if lower graded disc is used.

The quality of a disc depends on its coating chemical and technology. There are so many varieties of discs available. Unfortunately, not all of optical disc drives are capable to adapt them. If you encountered high failure rate, please try different type/brand of discs or reducing the writing speed.

删除:

Apus EZ PLUS 5910D provides three burning speeds for your convenience. By pressing the **high** button, the device will operate under the maximum possible writing speed. Therefore, the maximum production rate can be expected.

At the maximum speed, burning a 4.7 GB DVD shall take less than 20 minutes. If it takes longer, please check both the quality of the blank and the master disc. Use a reliable master disc for testing purpose. Change blank discs to other brand or specification. You should also check the power supply for the reliability.

If you press the **normal** button, the device will be limited to copy under a middle speed. The burning quality can be better assured. When burning audio discs of music, this normal writing speed is recommended.

Pressing the **safe** button, the device will burn discs at a low speed. This is useful when the quality of the disc (master, blank or both) is not capable for high-speed or normal speed operation. Safe writing speed is suggested when duplicating old discs and low-speed discs.

To Make Duplication

1. Place the master disc into the input hopper.
2. Load the input hopper with the quantity of blank discs you want to duplicate. Place them on top of the master disc. (Refer to Loading Discs section for how to correctly load the blanks.)
3. For multiple master duplication, simply put another master disc on top of the first load, then load in the blank discs. Repeat the process as you wish.
(Note: Do not mix CD/DVD together during operation!)
4. Press **high**, **normal**, or **safe** button to start.

The successful burned discs will be stacked on the output spindle. Failed burned discs will be dropped to the reject bin.

Refer to the "To Stop a Running Job" section to stop duplication.

To Execute a Test-Burning (Simulation)

1. Load the master and blank discs as if you were duplicating discs.

2. Press the **test/cancel** button.

The test-burn function simulates the burning process, but does not really burn the disc. After the test process, the blank discs can still be used as brand new discs.

If the disc passed the test, it will be moved to the output spindle. If not, it will be dropped to the reject bin.

Please refer to the "To Stop a Running Job" section for canceling simulation.

To Execute a System Check (Initialization)

In ready mode, press **high** button while holding **safe** button, the device will start an initialization process as it would when you turn on the device. After the system check is done, the device will return to the ready mode.

To Park the Arm (For transportation)

In ready mode, press **normal** button while holding **safe** button, the device will park the robotic arm for transportation. After the arm parks, the ready LED indicator will be lit. You now may turn off the device for transportation.

Turn on the power to release the device from the park condition,

Maintenance

Periodically cleaning the device can ensure the performance of the unit. Follow the steps below for maintenance.

1. Turn off the AC power switch.
2. Remove the master and blank discs.
3. Unplug the power cord from the wall outlet.
4. Use a clean lint-free cloth moistened with warm water.
5. Dry the unit immediately with a clean lint free cloth.

Frequently Asked Questions

Q: *Burning failure rate is high.*

- Try a lower writing speed such as normal or safe.
- Use different brand of blank discs.
- Check power source.

Q: *Disc jam during operation.*

- Check if the disc is standard size. (120mm)
- Make sure discs are leveled in the input hopper.
- Reduce the quantity of disc per load. Some discs are too weak or soft.
- Use different brand of blank discs.

Q: *The power switch does not work every time.*

- Allow 30 seconds interval between turn on/off.

Q: *Robotics arm fails to pick up the discs.*

- Check if the disc is standard size. (120mm)
- Make sure the discs are not out of shape.

Q: *Dropping 2 or more discs at the same time.*

- Check if the disc is standard size. (120mm)
- Make sure discs are leveled while inserted.
- Loose discs before use. Discs may stick together in package.
- Use discs of the same brand/lot. Do not mix different brand/lot discs.
- Reduce the quantity of disc per load. Some discs are too weak or soft.
- Use different brand of blank discs.

Q: *Discs cannot be dropped into the rod.*

- Make sure the unit is placed in a flat area.
- Make sure the output bin is attached to the unit properly.

Choosing Blank Disc

There are huge variety of recordable CDs and DVDs on the market with different brands, writing speeds, and packages. Due to the slightly difference of each brand, not all of the discs would work perfectly with the unit in every case.

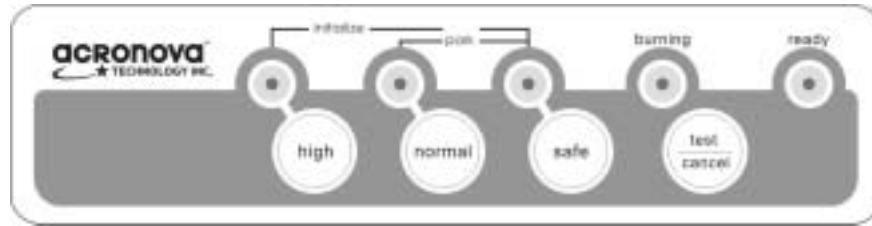
Please choose the blank disc that is most suitable for your application. We strongly suggest users test the blank discs by using simulation mode before the actual burning duplication. You may contact your local dealer for advice and supply for the best suitable blank disc to the unit and your application.

Production vs. Throughput

The quality of the master disc and the data format also play critical roles in a burning job and the quality of the discs produced. If you keep encountering difficulties, try a lower writing speed. In many cases the production rate shall successfully trades off the throughput rate.

Apus EZ PLUS 5910D can be restricted to three writing speeds simply by pushing different buttons respected. Note that selecting a high-speed does not mean the writing speed will be fixed at maximum. The system will automatically vary the writing speed during burning a disc from the inner ring to the outer ring. Your selections restrict the maximum writing speed to high, normal, or safe one.

LED Message Definitions



By reading the LED displays, users can easily identify the status of the device or any classify abnormal situation.

: Lit : Off : Flash : Run

| >> Normal Status << | |
|---|---|
| | Power-off |
| | Initial in process |
| | Unit in ready mode |
| | Park mode |
| >> Error Status << | |
| | #11: Memory error |
| | #21: Arm error |
| | #31: Module error |
| | #32: Pick Disc or Release Disc Fail Timeout error |
| | #33: Pick Disc or Release Disc error |
| | #41: Drop Disc error |
| | #42: Module Timeout error |
| | #43: Module Function error |
| LED (from left to right): high-normal-safe-burn-ready | |

If a power-on reboot cannot solve the problem, please contact dealer, authorized service center, or e-mail us.

Acronova Technology, Inc.

www.acronova.com

Part#: EZ5810-30421-30R1